



BEST OF ZAMBIA'S WILDLIFE - 3 PARK PACKAGE – July-November 2024

The perfect combination of the best wildlife areas in Zambia - 4 nights at Ntemwa-Busanga camp in the Northern Kafue, 4 nights at either Chula or Kutali camps in the Lower Zambezi NP and 4 nights at Flatdogs Camp in the South Luangwa.

Day 1 Check in at Lusaka airport for your light aircraft charter flight to the Northern Kafue National Park.

Lusaka – Busanga airstrip Classic Zambia
Timings for this charter will only be confirmed closer to the time of travel. Please note that there is a luggage limit of 15kgs per person on all light aircraft flights and luggage must be packed in soft sided bags.

On arrival at the Busanga airstrip, you will be met by your Classic Zambia guide and transferred by road to the camp (+/- 45 minutes).

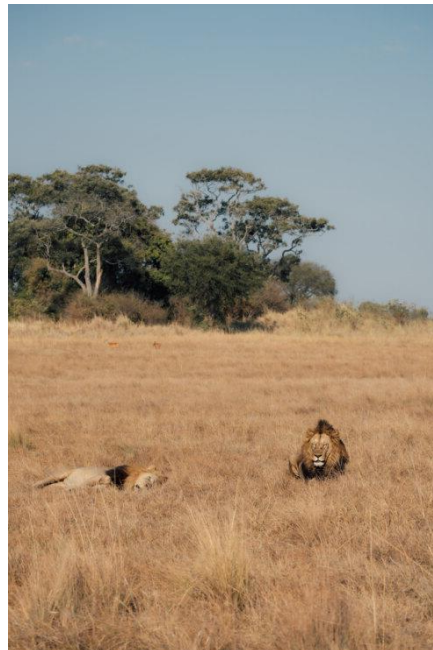
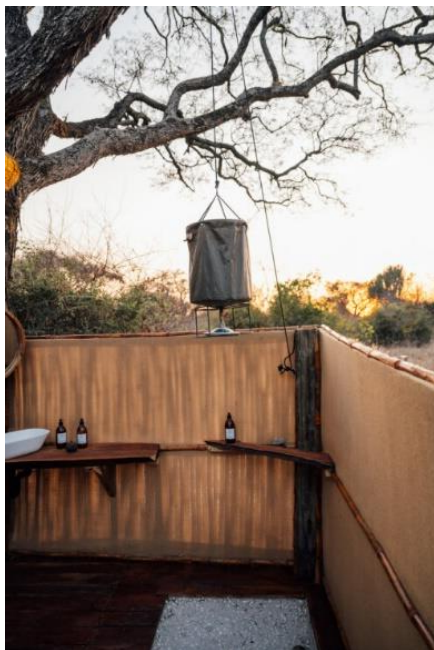
Day1-5 **NTEMWA BUSANGA CAMP – 4 nights**

Ntemwa Busanga Camp is a small, rustic, seasonal bush camp situated in the southern region of the vast Busanga Plains of the Kafue National Park. With just five thatched rooms, NBC is the perfect place to experience the incredible variety of wildlife and birdlife this very special place can offer. The rooms have semi-open bathrooms and bucket showers filled on demand. From camp, you will be able to explore this wild area on morning and afternoon game drives, as well as spending all day out in the thick of the



action and including a night drive on the way back to camp. The rich grasslands of the Busanga Plains attracts large concentrations of plains game, including red lechwe, zebra, puku and others which in turn attract predators, in particular lion, wild dog, hyaena & cheetah. The lion of Busanga are rather special as they have adapted to the seasonal flooding of the landscape and

can be seen swimming and jumping channels in order to take the water loving lechwe. There is also an opportunity to see the large herds of roan and sable antelope, not found in any of the other parks you will visit. All accommodation, meals, drinks including house wine, beer and spirits, safari activities, laundry, ZAWA Park Fees and KCC and SES MediVac Cover are all included.



Day 5

You will be transferred back to Busanga airstrip for your light aircraft flight directly to the Lower Zambezi National Park.

Busanga – Jeki
Light aircraft

Classic Zambia

You will be met at the airstrip and transferred to your camp, Chula or Kutali, depending on availability and your preference.

Day 5-9

CHULA OR KUTALI BUSHCAMPING EXPERIENCE – 4 nights

Classic Zambia Safaris are the only operators in the Lower Zambezi National Park offering a natural wildlife experience. They prefer to show their guests



more of an authentic wilderness adventure based from either their Chula or Kutali bush camps. With a four

night stay, you will be able to explore in detail this beautiful National Park which perfectly compliments the Kafue and the South Luangwa. Kutali Camp is located under a stunningly cool Winterthorn forest on the secluded Kulefu Island in the remote eastern sector of the park. Chula Island Camp is located on Katengahumba Island, separated from the mainland by the famed canoeing area, the 'Discovery' channel. This secretive and private Island gives unparalleled views over the Zambezi River. Both camps offer extremely



comfortable bespoke tents, with high quality linen and mattresses, alongside flushing toilets, running water taps and traditional bucket-showers. These camps are able to offer the broadest possible

spectrum of safari activities. They are specialists in walking and canoe based safaris, with a high-caliber of qualified guides (in Zambia guides are professional, and accredited to the same standard as school teachers). They are also able to offer game drives, both day and night, alongside boat based safaris and even angling for those interested in trying their hand at landing the world famous Tigerfish! Photography is a passion of ours as a company and our guiding team are experts in light, angles and of course wildlife behaviour and



anticipation. Gliding silently in a canoe up to a big bull elephant dreamily munching his way through the lush grassy banks of the river is something you will never forget.

In the mornings, you will rise early with the light before maybe walking through the winter-thorn forest, listening for alarms and following tracks before returning to camp for lunch. In the afternoons you might canoe down “discovery channel” in the peace of the afternoon light before cruising back by boat to camp. This almost unique bush camp experience includes all meals, game-viewing activities, drinks, laundry, National Park Entry fees and airstrip transfers.



Day 9

You will be transferred back to Jeki airstrip for your flight to the South Luangwa at the end of your Lower Zambezi adventures.

Jeki – Mfuwe

Proflight Zambia

1045/1215 (direct flights on Sundays, Tuesdays and Thursdays only)

You will be met at Mfuwe airport by one of our safari guides and transferred to camp (30-40 minutes)

Day 9-13

LUXURY TENT AT FLATDOGS CAMP – 4 nights



The luxury ensuite safari tents allow you to feel as close as possible to the natural African landscape around you, there are large windows all around the tent so you can see and hear the animals feeding in camp as well as the hippopotamus honking to each other in the river in front of you! The tents are spacious with a king bed or two singles, large mosquito net, electric lights and plug sockets for re-charging batteries (UK style plug sockets and USB ports). There is also a room safe and tea and coffee-making facilities. The luxury tents have semi open en-suite bathrooms with hot shower, flush toilet and basin. Depending on your time of arrival, you can settle into camp and have some lunch, before we meet again in the courtyard for tea at 15h30, ready to head into the Park at 16h00, ready to explore this magnificent wilderness. Our guides take huge pride in their work, being able to identify numerous alarm calls and to track animals whilst aiming to anticipate their next move and position you for the best sightings.



As the sun starts to dip towards the horizon, your guide will find a good spot to stop so you can stretch your legs and watch the sun set with a cold drink in hand... Then, once it's nearly dark, you will carry on game-viewing with a spotlight, searching for some of our interesting nocturnal residents, like the leopard, lion, porcupine, civet, genet, owls and hyaena.



You will return to camp at around 20h00 in time for dinner and to relive your sightings with us!

It's an early start in the mornings; we offer you a light continental breakfast of toast and cereal, fruit, yoghurt, tea and coffee from 05h30 before you head out at 06h00 on a morning game drive, exploring the park, taking the



sightings as they come, with your guide detailing all you are seeing and adding interesting observations drawn from his years of experience in the Park. You will head back to camp at around 10h00, in time for breakfast or a brunch/lunch type meal –

whichever you would prefer. Then there is time to relax during the heat of the day, enjoying a dip in the pool perhaps or a siesta after your early start? For those keen to get even closer to nature, we also offer walking safaris for a maximum of six guests per walk, so that you can feel even more connected to your surroundings and feel the surge of adrenalin as you start tracking a predator on foot.



If you are interested in village life in this area, we can happily organize a visit to the nearby Mfuwe village, where you can see the local market and shops as well as visiting our anti-poaching base, or learning more about the fabulous community projects we support, including local schools and education tools within the classrooms. Classroom visits need to be carefully managed so as not to disturb lessons, but Harold is always happy to arrange things for you depending on your interests. This package includes your accommodation in a luxury en-suite safari tent, all meals, two game-viewing activities per day, National Park Entry fees, LCCF (Luangwa Conservation & Community Fund fee), laundry and return airport transfers. Not included are drinks or items of a personal nature like shop purchases or gratuities.

Day 13

You will be transferred back to Mfuwe airport for your flight back to Lusaka

Mfuwe – Lusaka

Proflight Zambia

Services end at Lusaka airport

Offer Valid from 01 July-31 October 2024:

TOTAL COST PER PERSON SHARING ACCOMMODATION: US\$10,044.00

This special offer includes all internal flights as described, airport departure taxes, all accommodation on full board basis, all safari activities, National Park Entry fees, Conservation fees and tourist levies, daily laundry, local drinks while in the Kafue and Lower Zambezi and all inter-camp and airport transfers as described.

This package excludes drinks while at Flatdogs Camp except for sundowner drinks on safari, all gratuities, tourist entry visas for Zambia if they apply and any items of a personal nature.